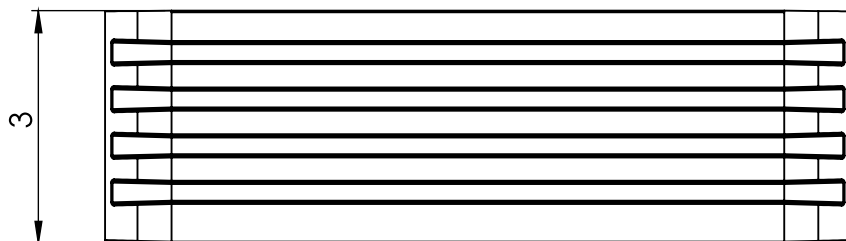
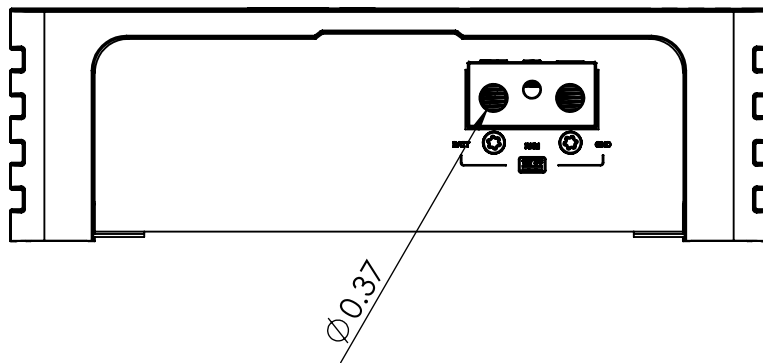
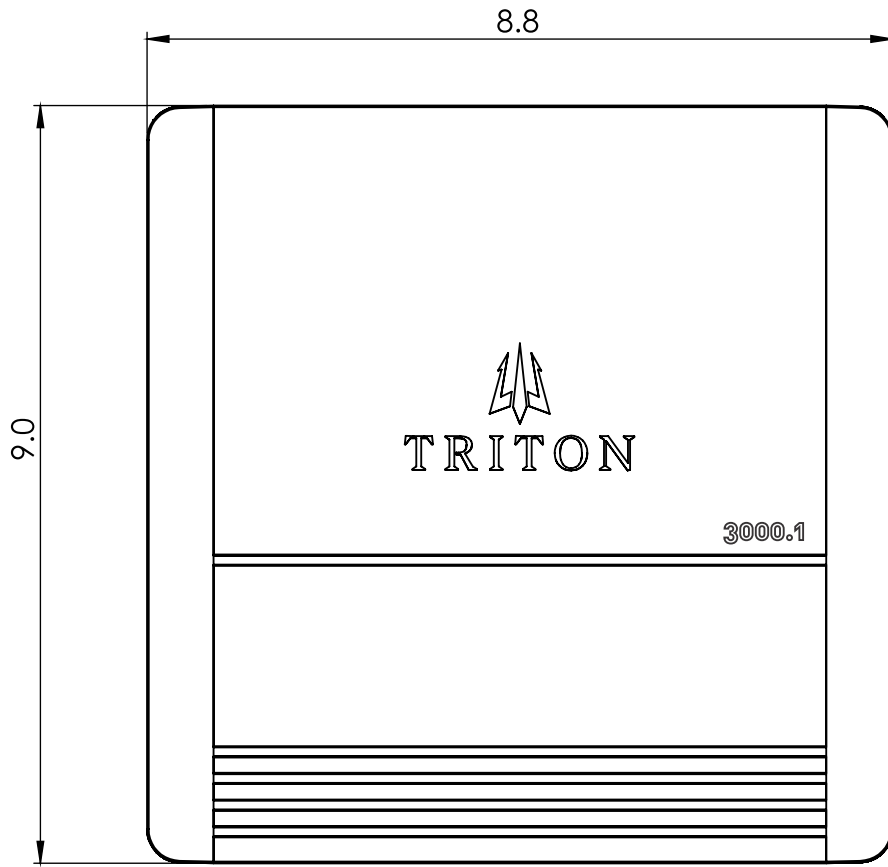


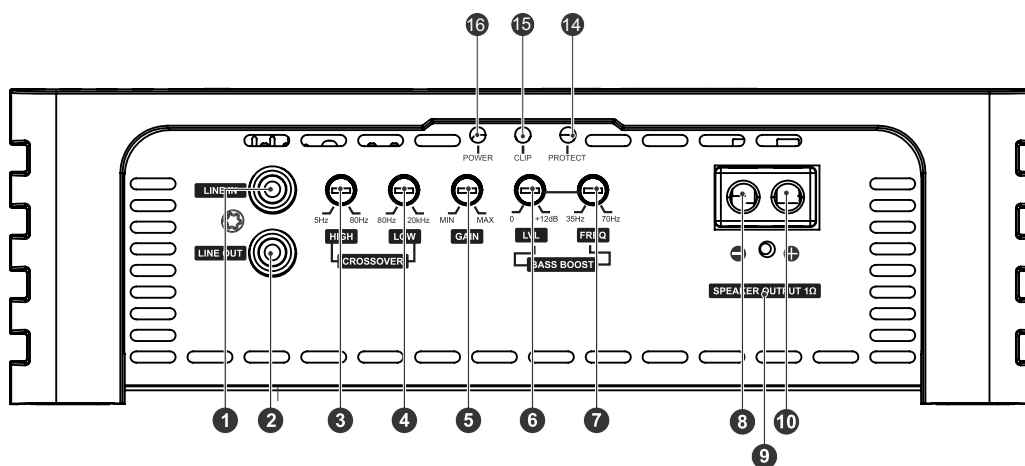
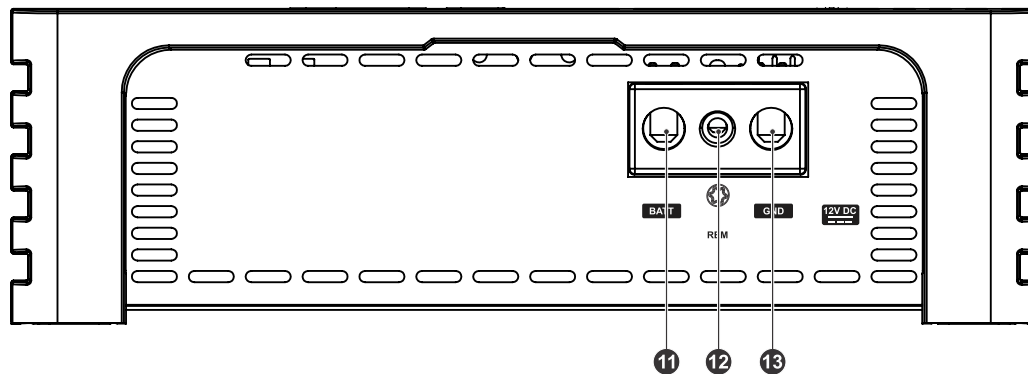
TRITON 3000.1

Dimensions



TRITON 3000.1

Panels description



- 01 Audio Input RCA connector;
- 02 Audio Output RCA connector;
- 03 Variable high pass filter control (5Hz ~ 80Hz);
- 04 Variable low pass filter control (80Hz ~ 25kHz);
- 05 Variable signal gain control;
- 06 Variable bass boost control (0dB ~ +12dB);
- 07 Variable bass reinforcement frequency
- 08 Negative speaker connector (-);
- 09 Minimum output impedance;
- 10 Positive audio output connector (+);
- 11 Positive power supply connector (+12V);
- 12 Remote power supply connector (REM);
- 13 Negative power supply connector (GND);
- 14 "Protection" LED indicator (Red);
- 15 "CLIP" LED indicator (Yellow);
- 16 "Power On" LED indicator (Blue).

TRITON 3000.1 EVO

Technical specs

Power RMS @12.6V @ 1Ω	3000W
Power RMS @14.4V @ 1Ω	3900W
Frequency response (-3db)	5Hz ~ 20kHz
Crossover LP 12dB/8	80Hz ~ 20kHz
Crossover HP 12dB/8	5Hz ~ 80Hz
THD+N (Nominal Impedance / 100Hz / LPF 15kHz / Nominal POWER)	1%
Damping factor (Nominal impedance @ 100Hz)	>1000
Power supply voltage	9V ~ 16V
SNR	84dB
Input sensitivity	0.2 ~4V
Current draw (Music)	153A
Current Draw (Max)	305A
Total Efficiency	79%
