



SQ80042

4-Channel Class D Amplifier



 **800W**
RMS POWER

 **FOUR**
CHANNEL

 **2 OHM**
IMPEDANCE

 **D**
CLASS

SPECIFICATIONS:

Power RMS 1 Ω @ 14.4V: 4 x 200W

Power RMS 2 Ω @ 14.4V: 4 x 110W

Power RMS 4 Ω @ 14.4V: 4 x 60W

Bridge Power 2 Ω @ 14.4V: 4 x 400W

Bridge Power 4 Ω @ 14.4V: 2 x 220W

Bridge Power 8 Ω @ 14.4V: 2 x 121W

THD+N @ Nominal Power: <1%

Frequency Response: 5Hz ~ 20kHz

SNR: 99dB

Input Sensitivity: 0.5V to 6V

Damping Factor: 100

Operating Voltage: 9V to 16V

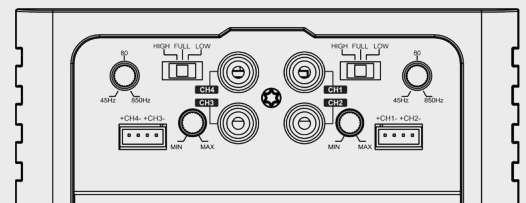
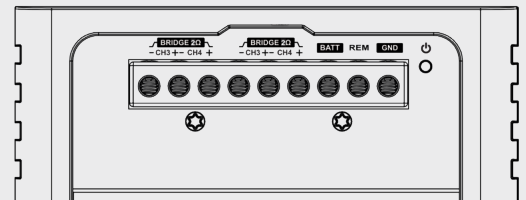
High Pass Filter: 45Hz to 850Hz

Low Pass Filter: 45Hz to 850Hz

Total Efficiency: 82.1%

Max Current Draw (A): 78

Music Current Draw (A): 39



Dimensions: 7-7/8" W x 5-3/8" L x 2-1/8" H